

# Meeting of the EU Nature and Biodiversity Directors 10.-12. 10. 2016





# Slovak Republic

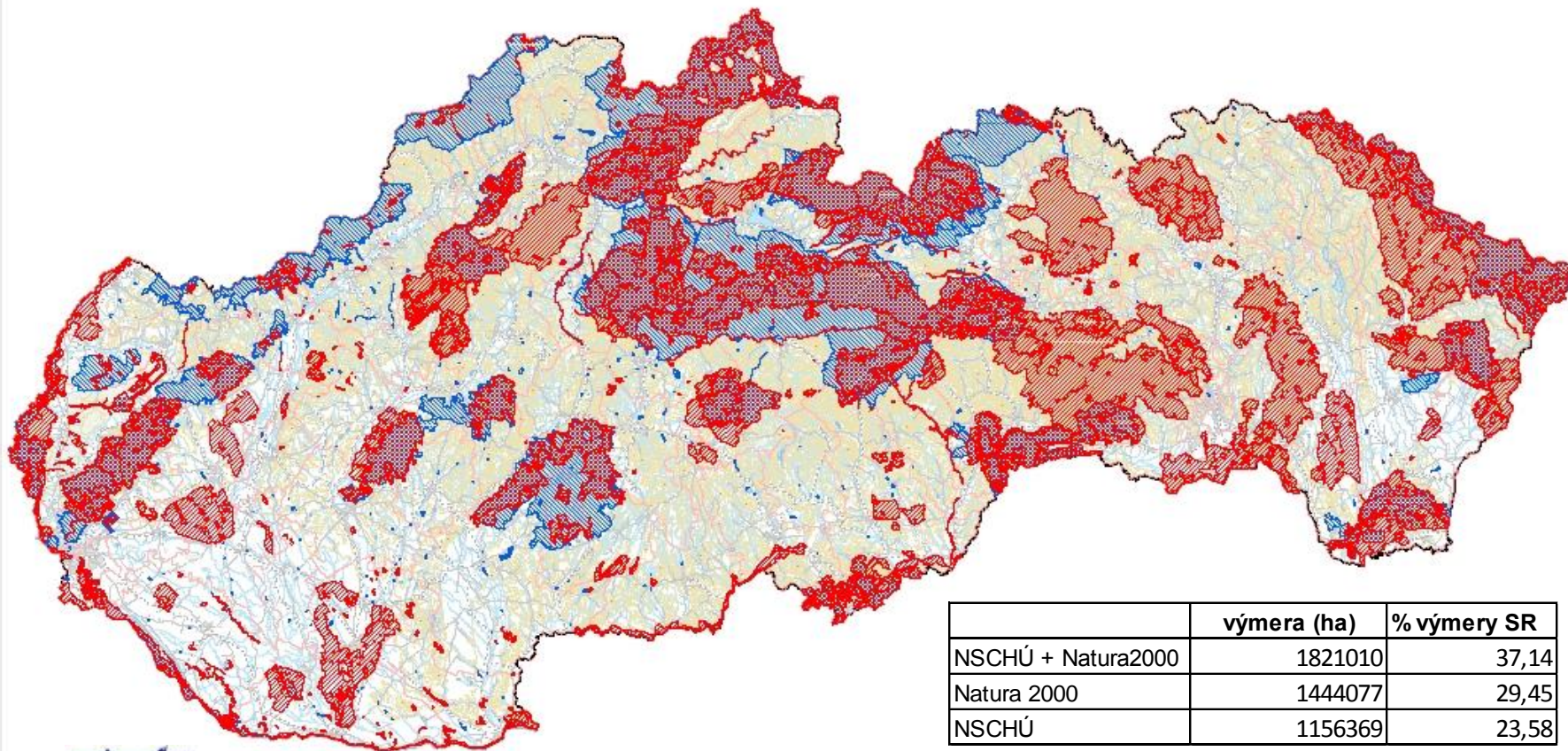
- ⌘ Independence: 1.1.1993
- ⌘ Total surface: 49 036 km<sup>2</sup>
- ⌘ Inhabitants: 5,5 mil people
- ⌘ Capital: Bratislava
- ⌘ Member of EU: 1.5.2004
- ⌘ Member of Schengen: 21.12.2007
- ⌘ Member of Euro zone: 1.1.2009



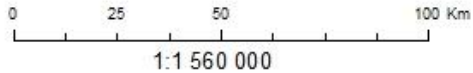
# Národná sústava chránených území a Natura 2000

## Legenda:

-  Sústava CHÚ Natura 2000
-  Národná sústava CHÚ



	výmera (ha)	% výmery SR
NSCHÚ + Natura2000	1821010	37,14
Natura 2000	1444077	29,45
NSCHÚ	1156369	23,58



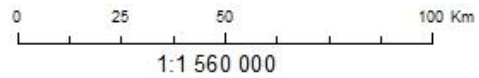
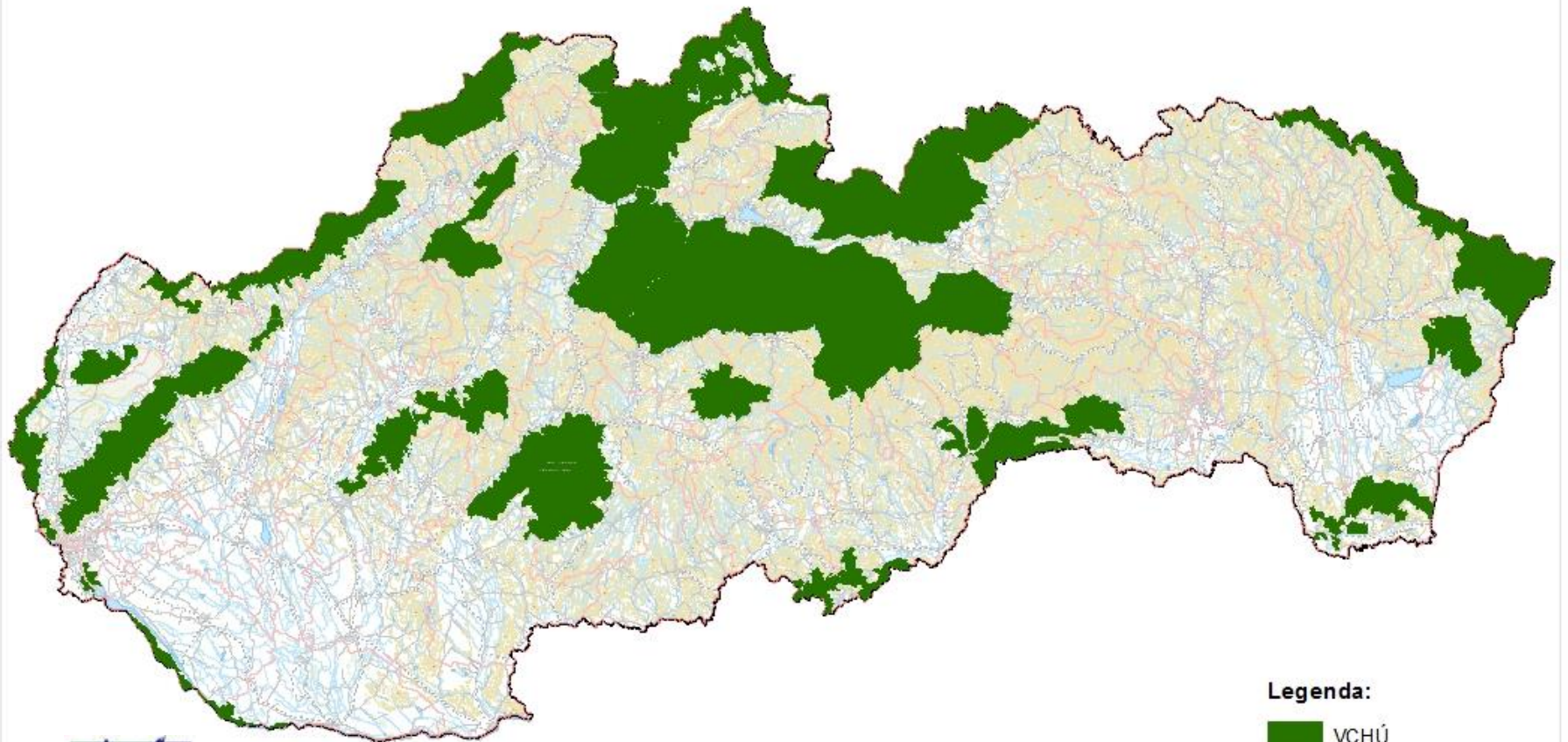


# Národná sústava chránených území

## National categories of large-scale protected areas

Protected landscape area(CHKO)

National park (NP)





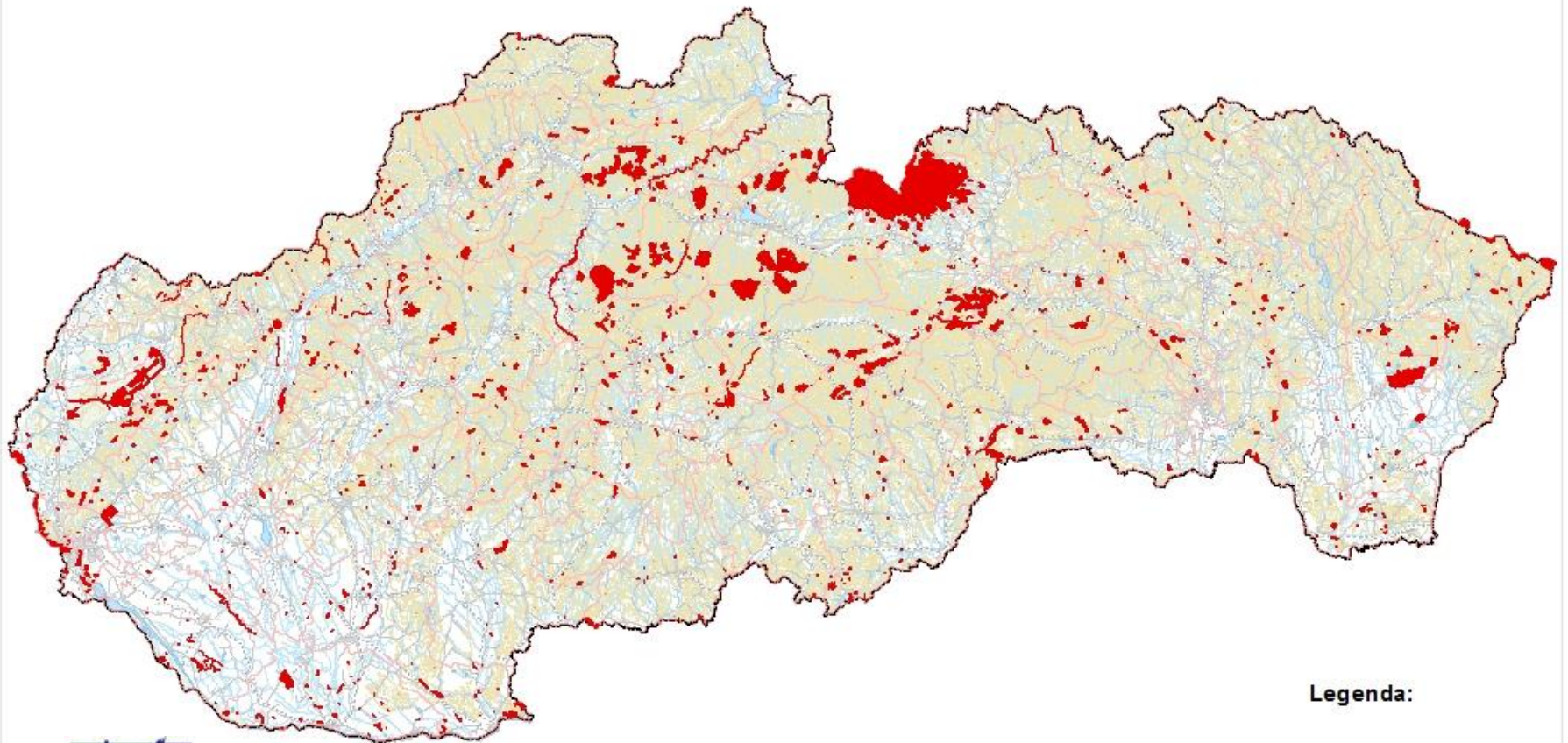
# Národná sústava chránených území

## Small scale protected areas

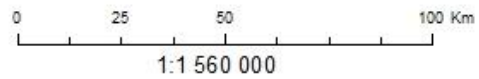
Protected site

Nature reserve or national nature reserve

Nature monument or national nature monument



Legenda:

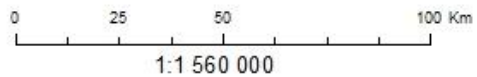
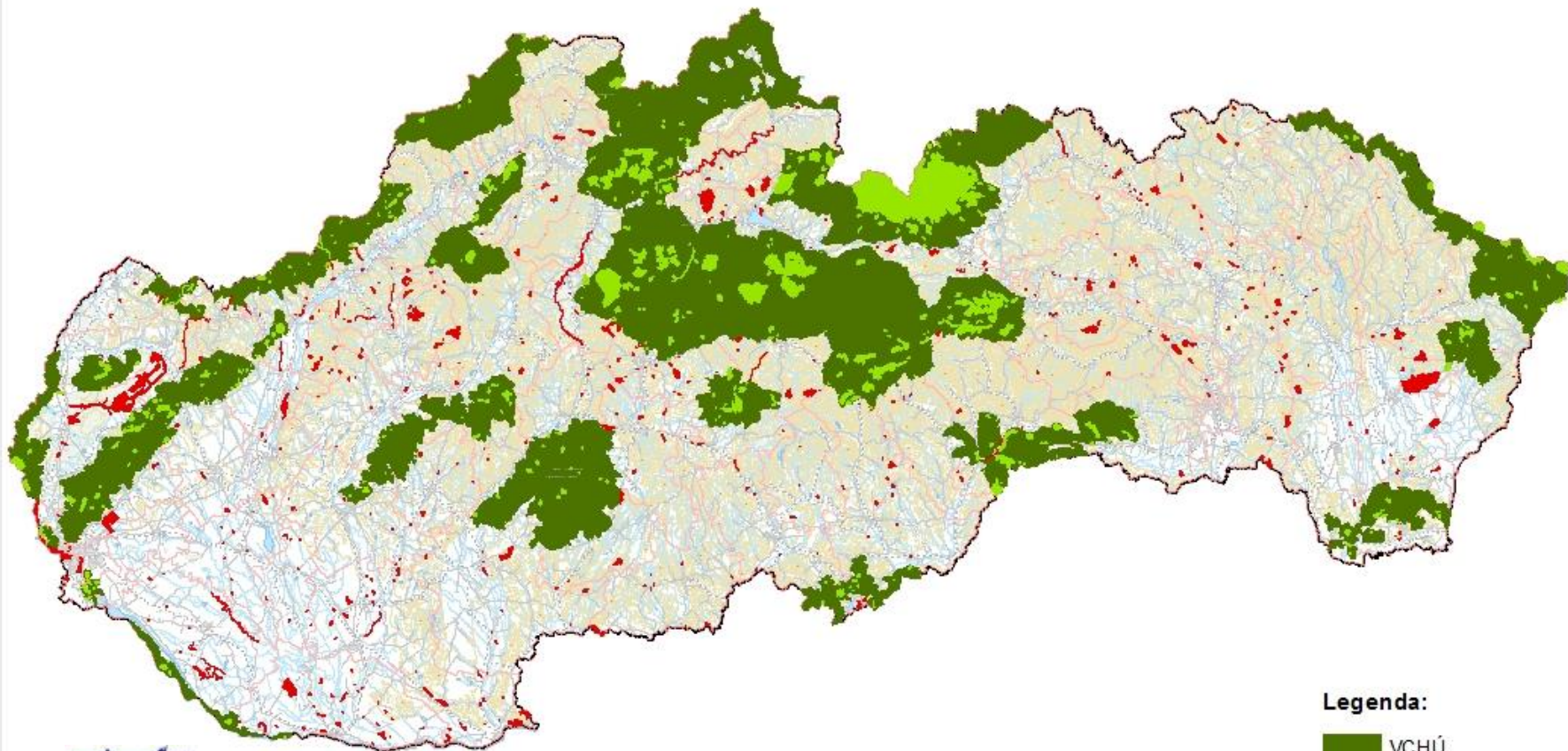









# Národná sústava chránených území

	surface (ha)	% of SR
small in large	89379	1,82
large	1124340	22,93
small	32129	0,66



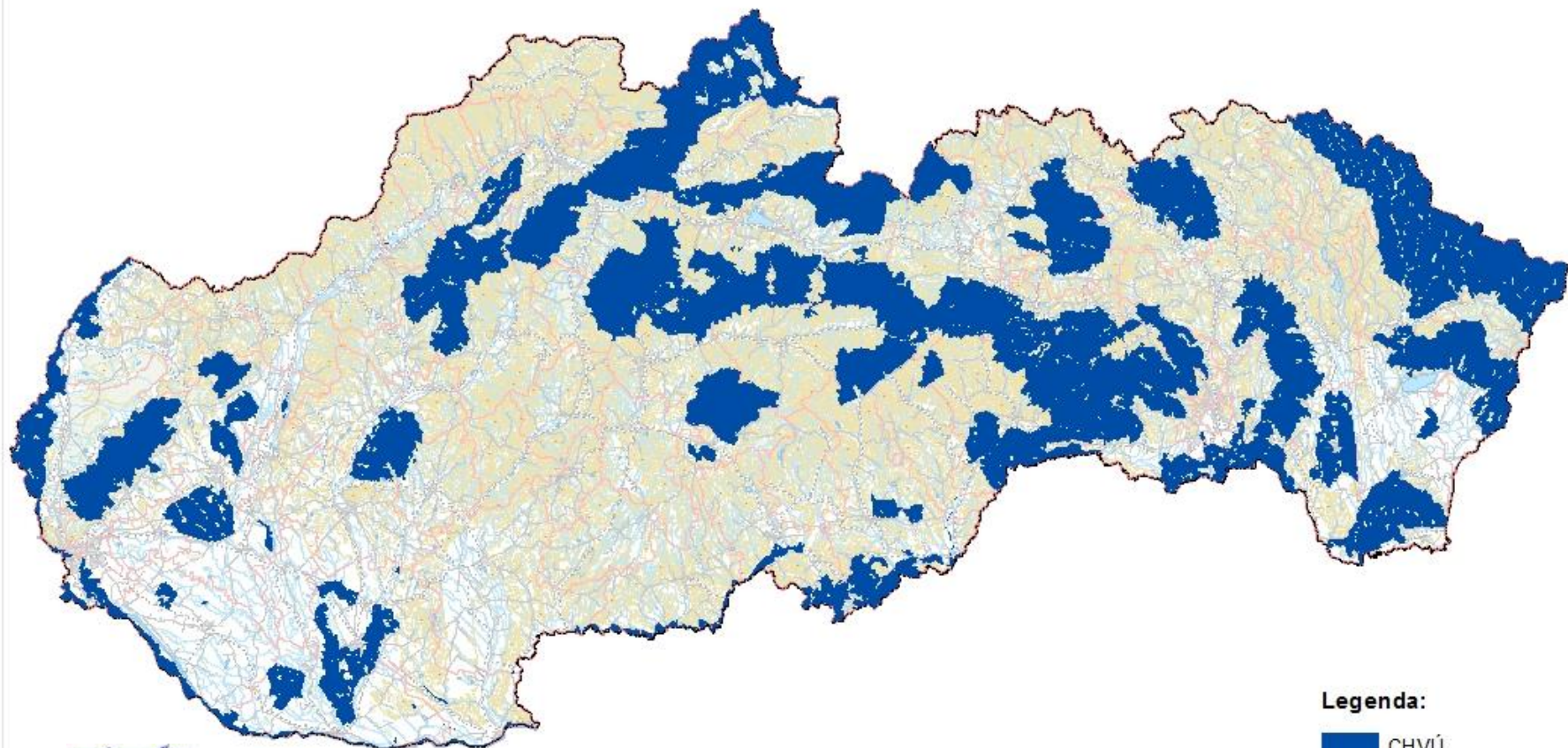
## Legenda:

-  VCHÚ
-  MCHÚ vo VCHÚ
-  MCHÚ mimo VCHÚ



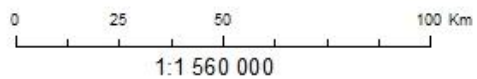
# Sústava chránených území Natura 2000

## 41 Special Protection Areas SPA



Legenda:

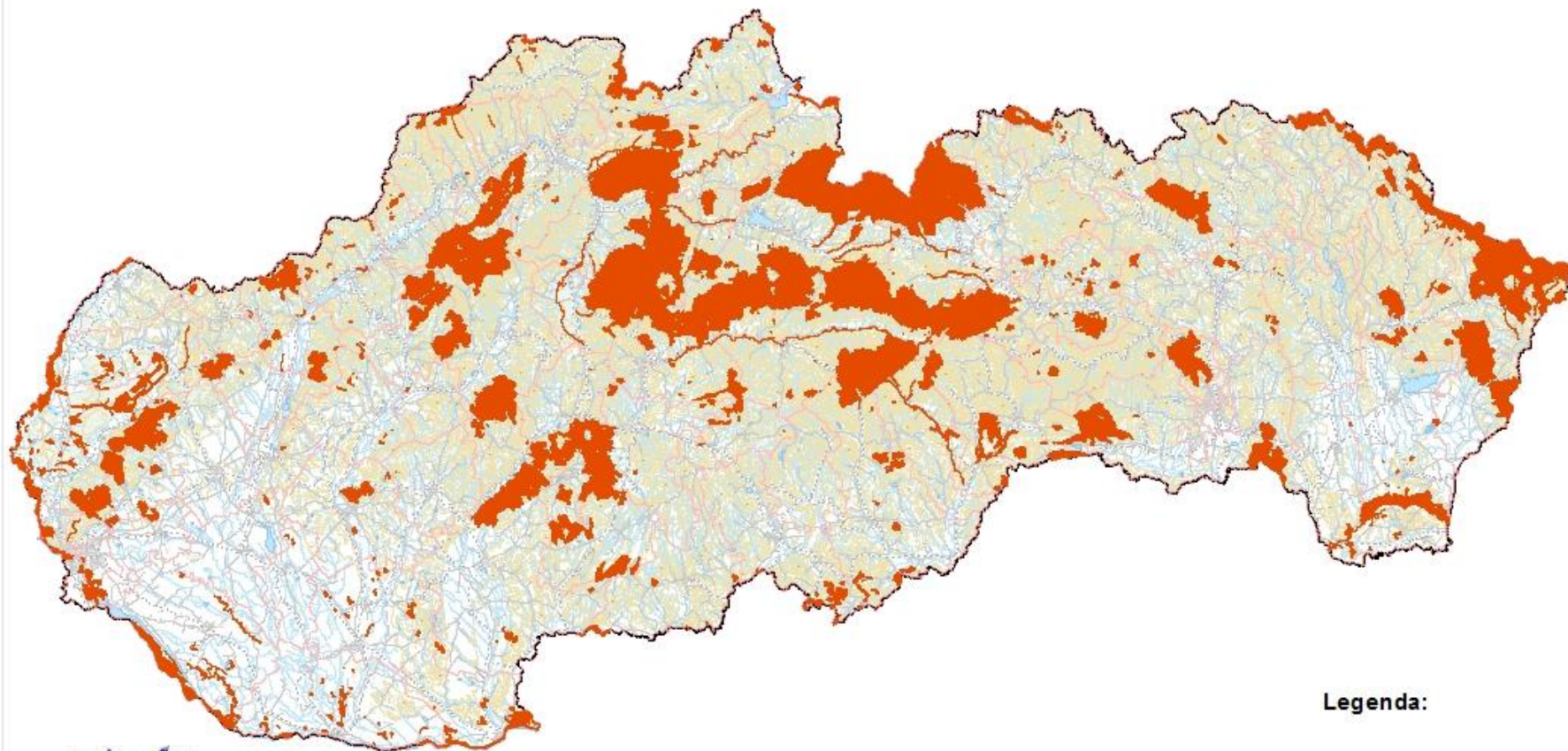
■ CHVÚ





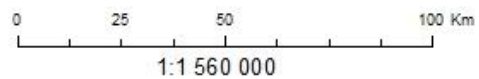
# Sústava chránených území Natura 2000

**473 Sites of Community Importance**



**Legenda:**

 UEV





## Sústava chránených území Natura 2000

Total surface area of Natura 2000 sites (in ha):

41 SPAs – 1,282,811

473 SCIs – 584,123

Overlap with national PAs network:

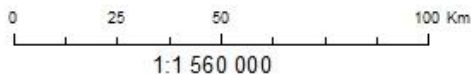
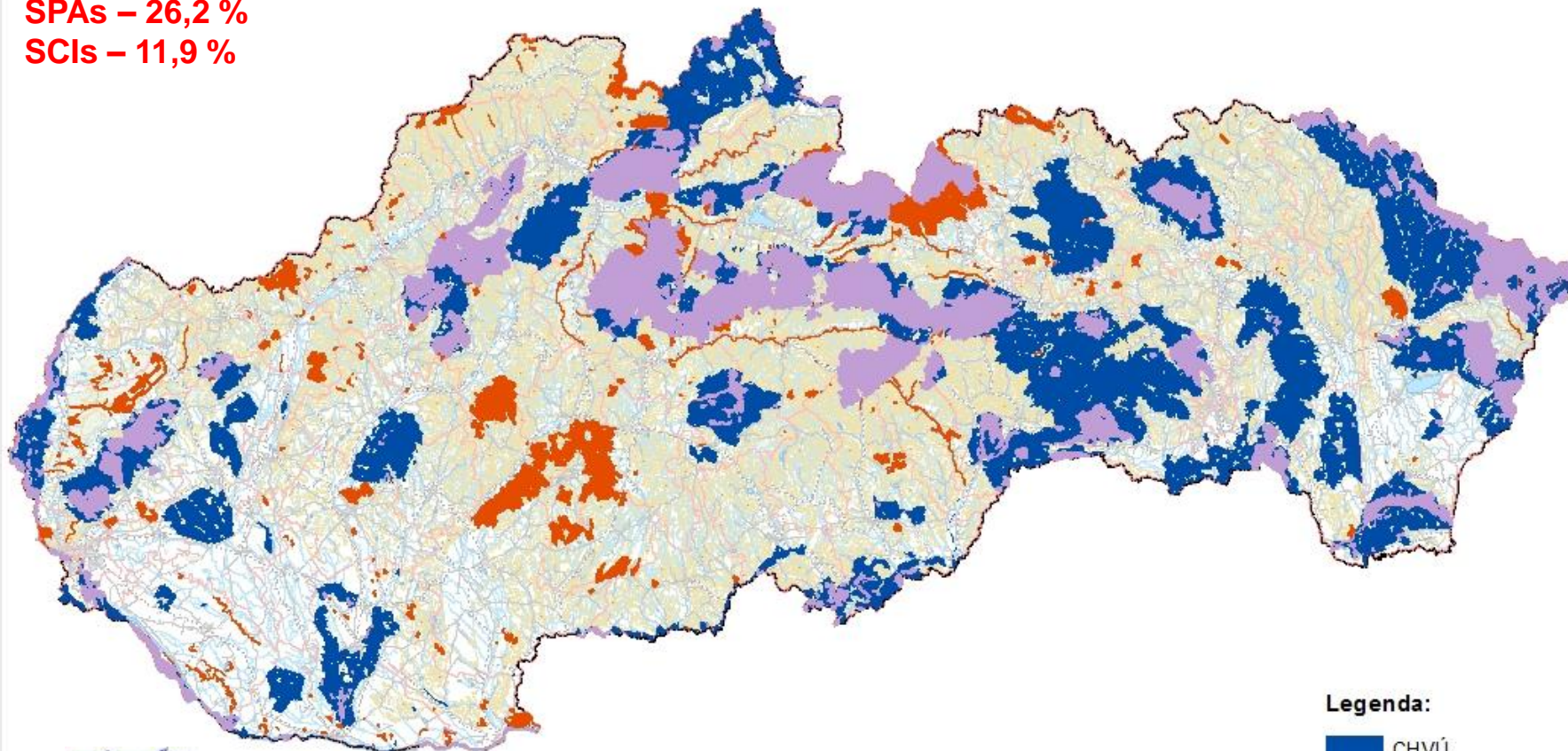
SPAs: 56 %

SCIs: 86 %

Percentage in relation to national area:

SPAs – 26,2 %

SCIs – 11,9 %





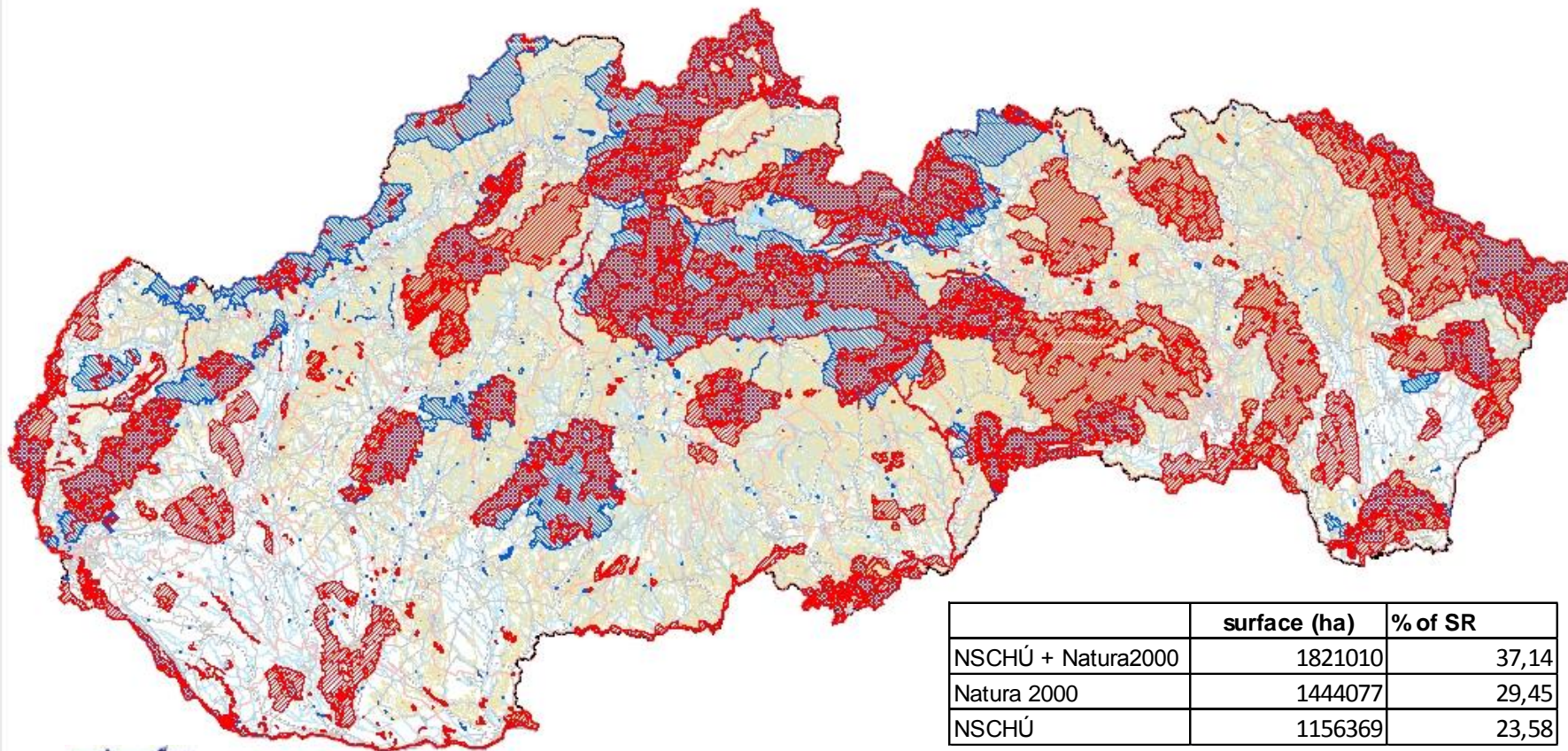
Legenda:

- CHVÚ
- UEV v CHVÚ
- UEV mimo CHVÚ

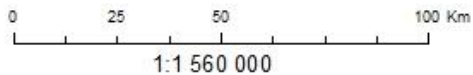
# Národná sústava chránených území a Natura 2000

## Legenda:

-  Sústava CHÚ Natura 2000
-  Národná sústava CHÚ



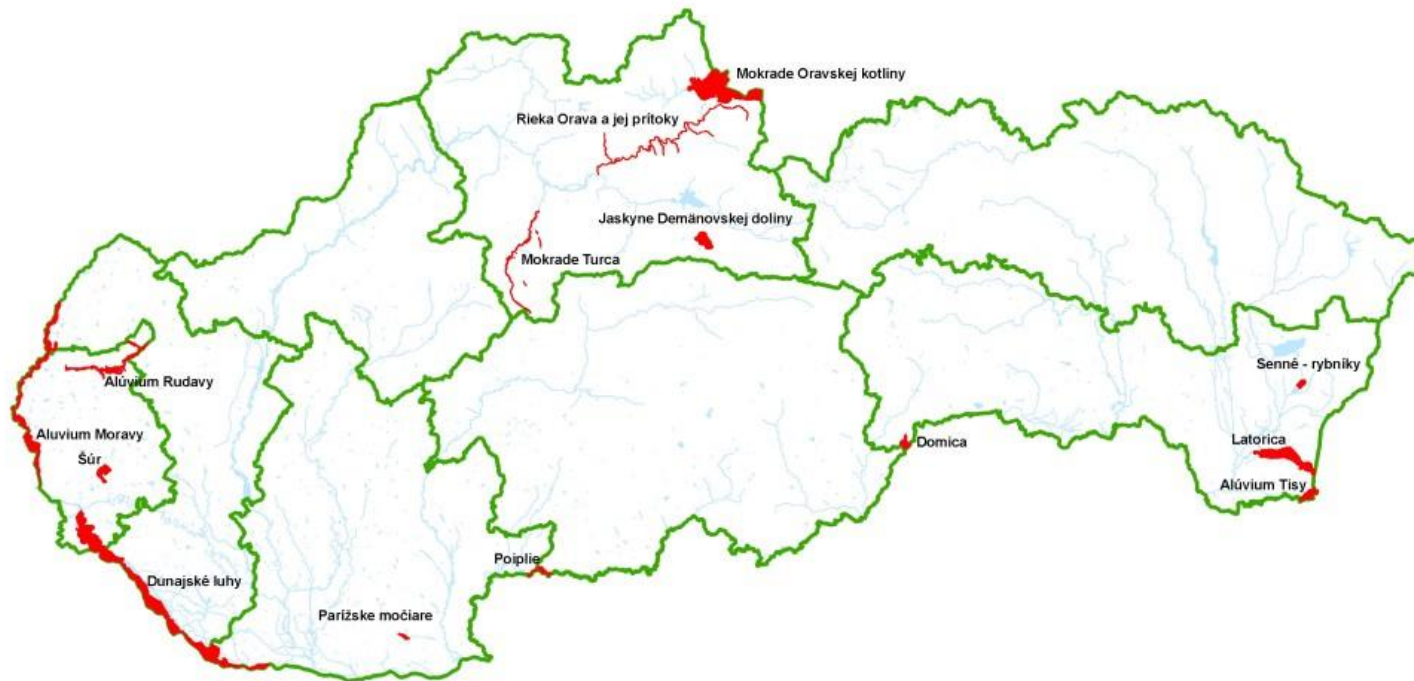
	surface (ha)	% of SR
NSCHÚ + Natura2000	1821010	37,14
Natura 2000	1444077	29,45
NSCHÚ	1156369	23,58







# Ramsar sites in Slovakia



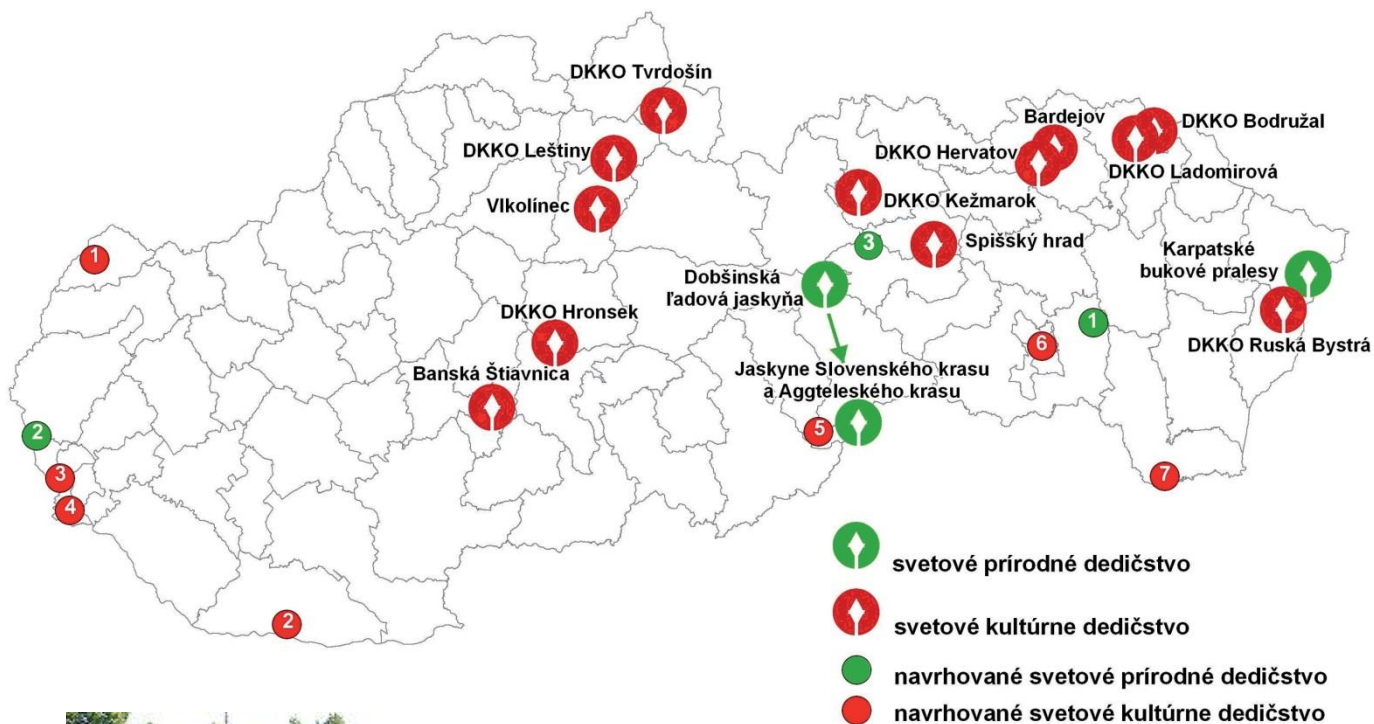
Ramsar Convention on Wetlands

Total number of wetlands of international importance (Ramsar sites):

14



# World Heritage Sites



Total number of WH sites: **7**  
 - 5 Cultural Heritage sites  
 - 2 Natural Heritage Sites







# System of nature conservation

## Environmental authorities:

- Ministry of Environment of the SR

## Expert NC organization – prepares expert opinion:

- SNC SR

## Control and enforcement:

- Slovak environmental inspection

## Landowners and land users:

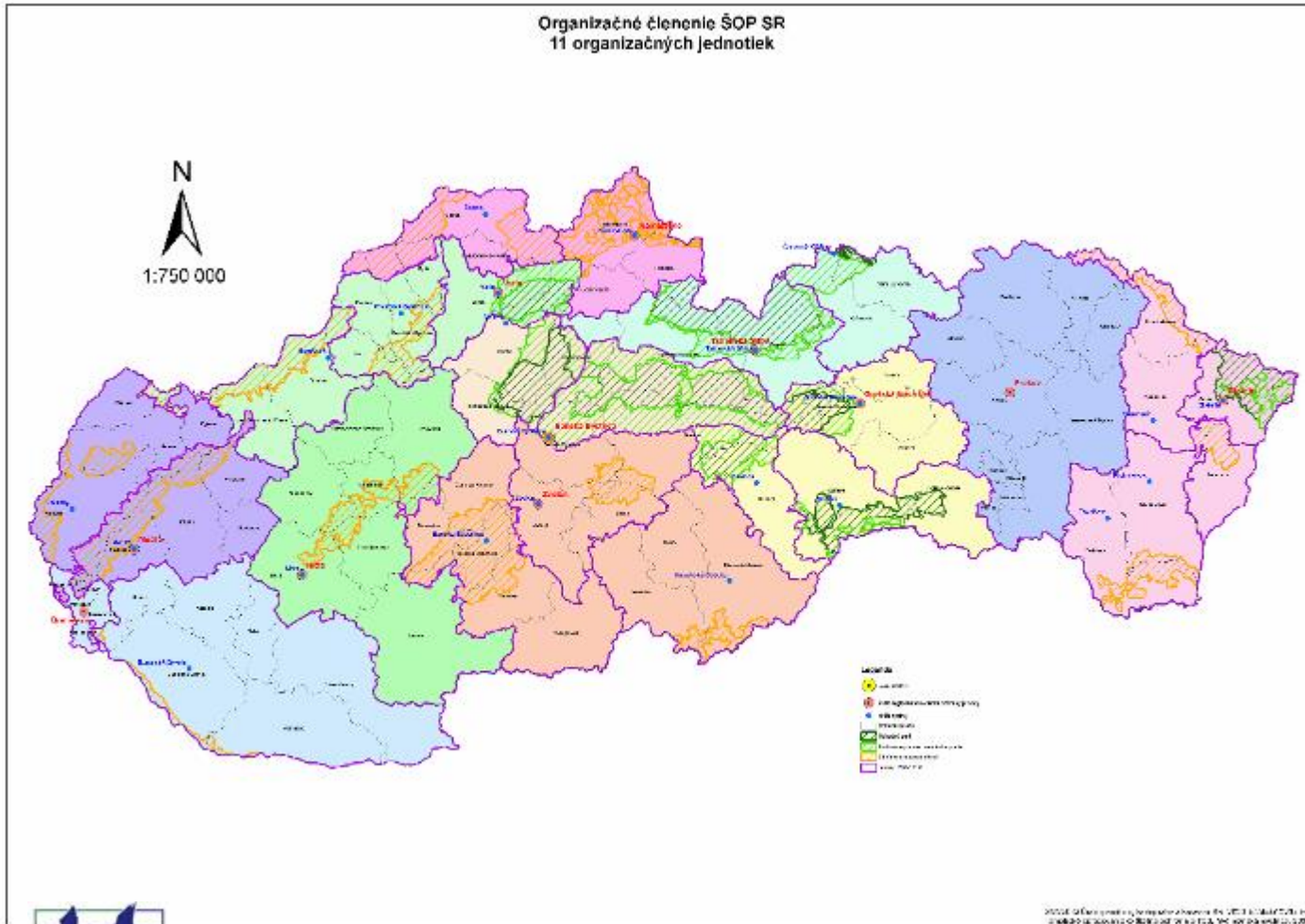
- State Forests enterprise
- State Forest of Tatra NP
- LPM Ulič enterprise
- Private forest owners / private corporations / urbariats

SK EU2016





# Organizational structure of the SNC SR



Headquarters  
(Directorate) in Banská  
Bystrica (Central  
Slovakia)

9 NP Administrations

14 PLA Administrations

1100 small-scale PAs

2 Regional Centres

Slovak Caves  
Administration



ŠOP SR, Bratislava, 2011



# Monitoring system of EU species and habitats



- 10 000 permanent monitoring plots established and monitored
- systematic monitoring of 146 animal species, 49 plant species and 66 habitat types





Thank you for your attention

[www.minzp.sk](http://www.minzp.sk)

[www.sopsr.sk](http://www.sopsr.sk)

[www.biomonitoring.sk](http://www.biomonitoring.sk)

